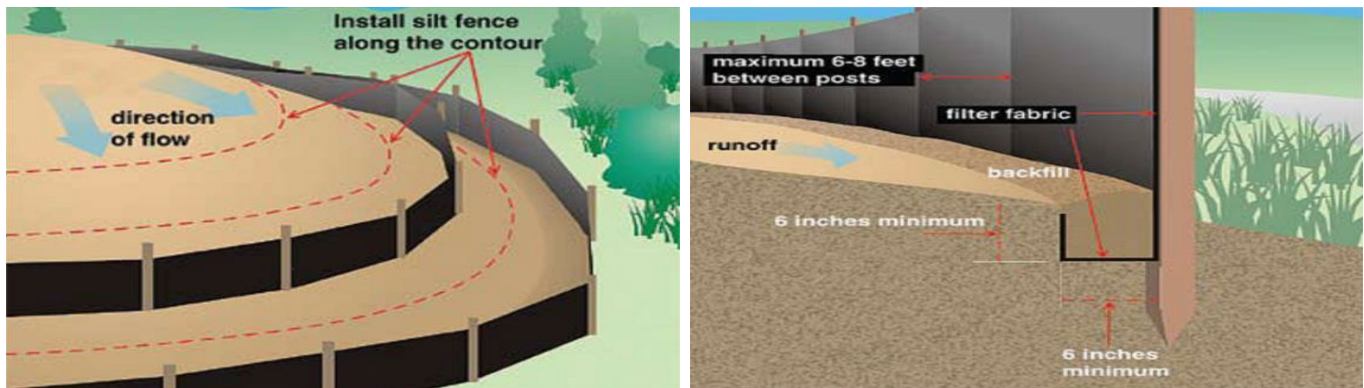


Erosion and Sedimentation Control Minimum Requirements for Single Family Home Construction Sites

- ✓ **Establish a gravel construction entrance/exit for the site**
 - Minimum 50' long X 20' wide
 - Use #57 stone (2"- 3" aggregate)
 - Minimum of 6" thick
- ✓ **Place and utilize a covered waste receptacle on the construction site**
 - Prevent rain and wind exposure
- ✓ **Install and maintain perimeter control devices to keep dirt on site during construction**
 - Utilize silt fence (guidelines below) or other methods



In addition to the minimum requirements, the following practices are recommended to keep dirt on site:

- Phase in clearing the site rather than clearing the entire property at once.
- Use temporary/permanent stabilization on areas not being used for 14 days.
- Permanently stabilize the site as soon as possible.

You can book an inspection online or by phone (Using IVR & SelectTXT).

To Schedule by Phone using IVR: dial 205-918-7762.

To Schedule with SelectTXT: send text to 844-752-6068.

[IVR and SelectTXT Instructional Brochure](#)